

Introduction

This user guide is for BDE-BLEM205-IN, a Bluetooth 5.0 Low Energy Module based on TI Bluetooth 5.0 Low Energy SoC CC2642R. BDE-BLEM205-IN is built to meet your low cost and ultra-low power consumption needs. It explains how to run the BDE-BLEM205-IN on the launchpad of TI. Like the connection between the BDE-BLEM205-IN and the launchpad, and the steps about running the example.

Get Ready

The following tools are recommended to develop with BDE-BLEM205-IN.

Hardware tools:

- PC or Laptop
- EVB07 or Launchpad of TI
- USB cable for power supply and debugging

Software tools:

- Terminal software such as CCS, IAR.
- [CCS download](#)
- [Software Development Kit \(SDK\)](#)

Build Your First Application

Once you have the Hardware and Software tools in place, please following the following steps:

- Connect the Hardware

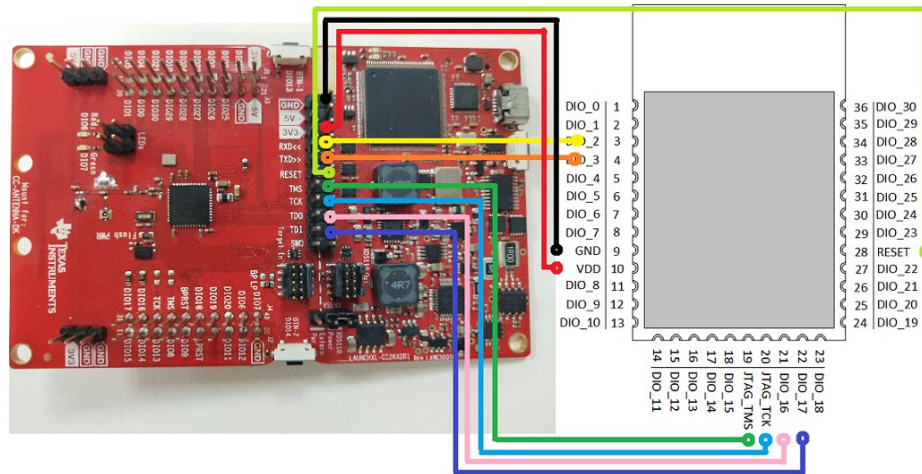
If you chose EVB07 as launchpad:

You need to use USB cable to connect EVB07 and PC or laptop. As for the BDE-BLEM205-IN, just put it into the launchpad and connect the pin with Jumpers.

Bluetooth 5.0 Low Energy Module

If you chose launchpad of TI:

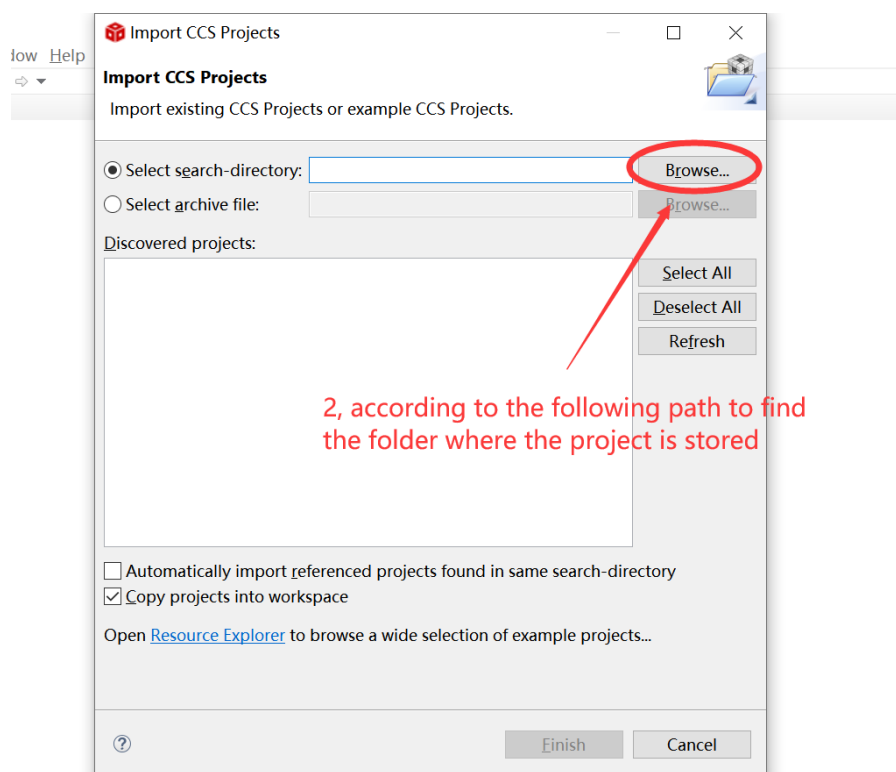
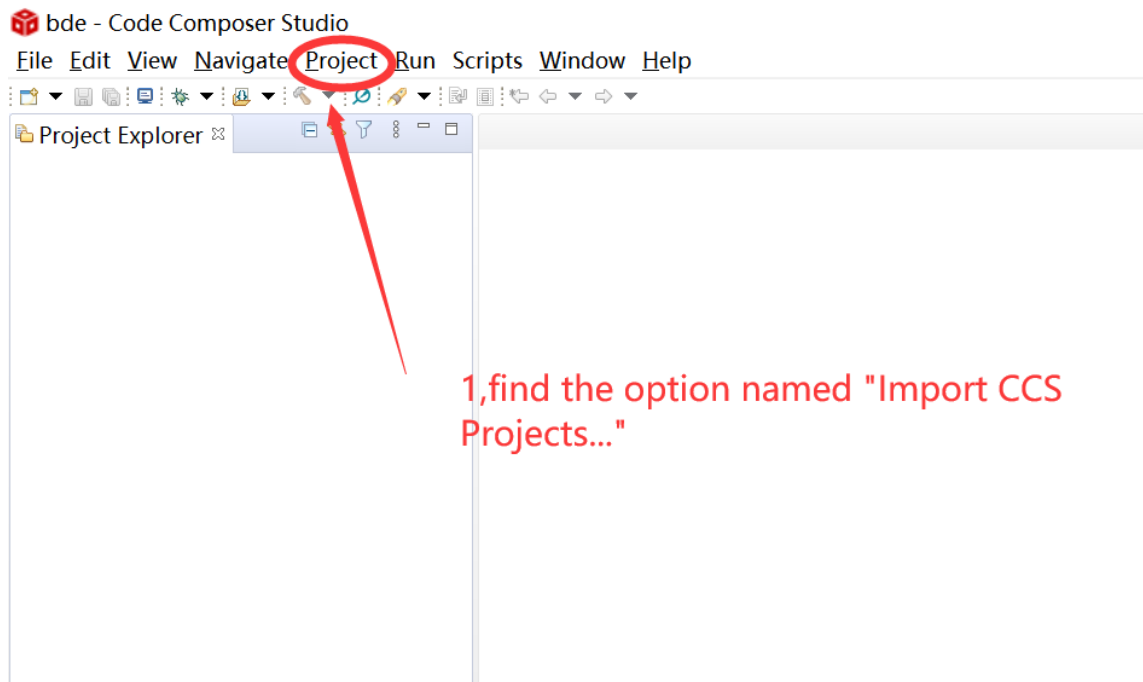
The connection guide as follows.



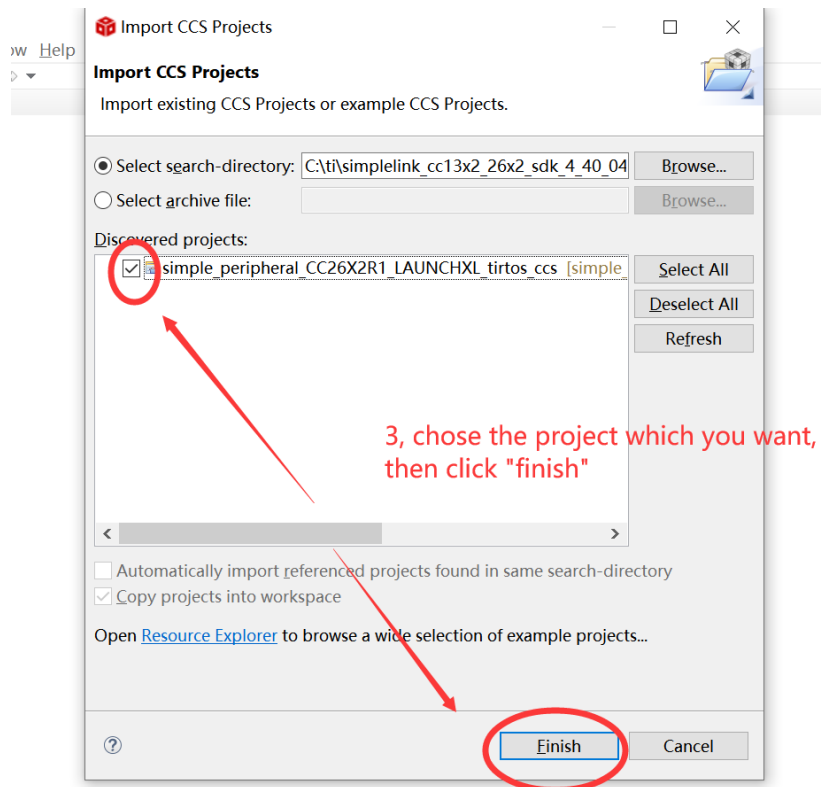
Connection Designator	BDE-BLEM205-IN	LaunchPad Pin
3V3 Power	VDD	3V3
Ground	GND	GND
RST	RST	RESET
TMS	TMS	TMS
TCK	TCK	TCK
TDO	DIO16	TDO
TDI	DIO17	TDI
RXD	DIO2	RXD
TXD	DIO3	TXD

Optional: TDO, TDI, RXD, TXD

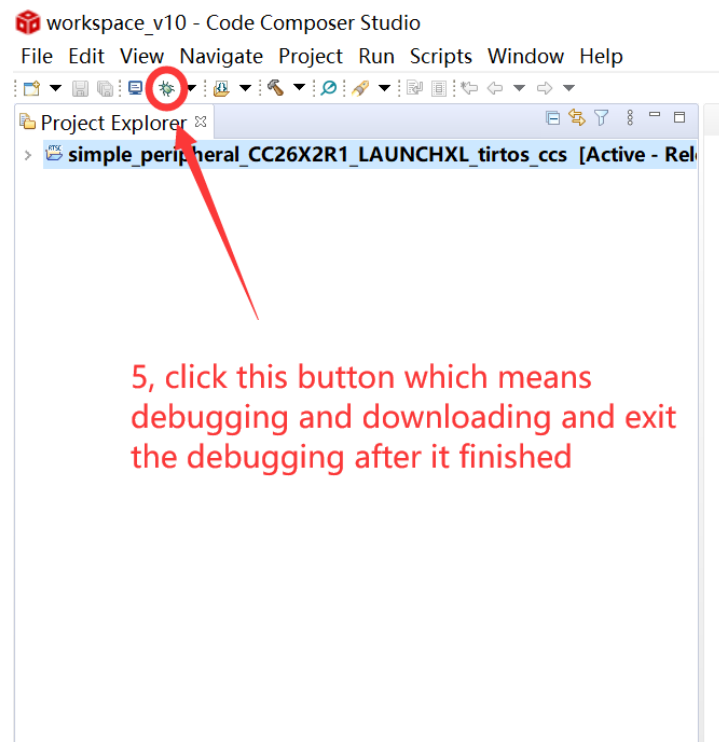
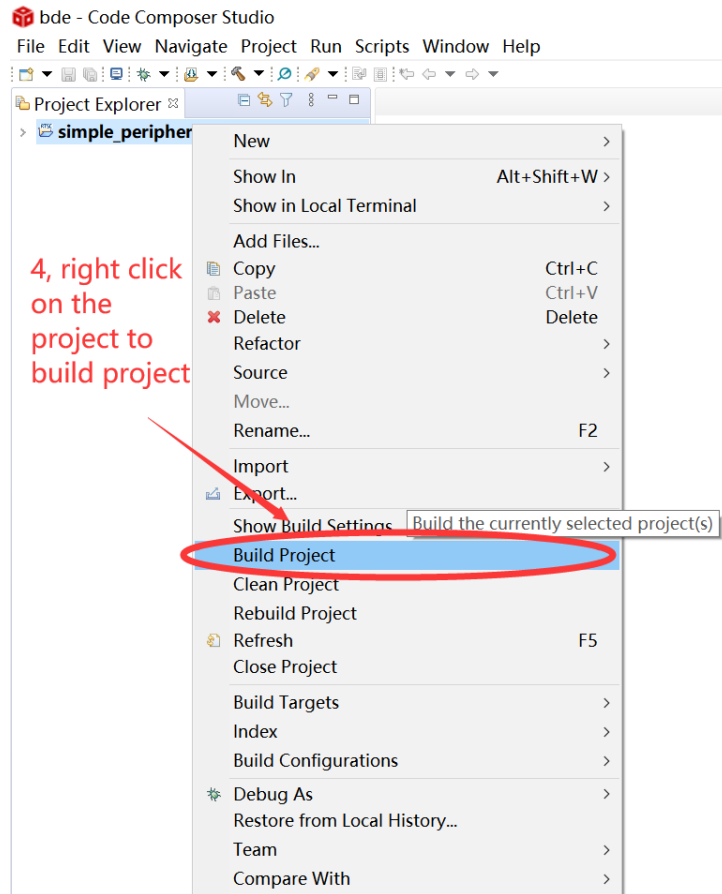
- Build the first Application



According to the follow path to find the project:
 ti\simplelink_cc13x2_26x2_sdk_4_40_04_04\examples\rtos\CC26X2R1_LAUNCHXL\ble5s
 tack\simple_peripheral\tirtos\ccs



Bluetooth 5.0 Low Energy Module



- After the above steps, you can run the program on BDE-BLEM205-IN.
- You could also follow the following links to build the first application.



Bluetooth 5.0 Low Energy Module

[CC13x2, CC26x2 SimpleLink™ Wireless MCU Technical Reference Manual \(Rev. D\)](#)

Other Resources

[Mac OS Installer for SimpleLink CC13X2 26X2 SDK](#)

[Linux Installer for SimpleLink CC13X2 26X2 SDK](#)

[Mac OS Installer for Code Composer Studio IDE](#)

[Linux Installer for Code Composer Studio IDE](#)

[CC2642R SimpleLink™ Bluetooth® 5.0 Low Energy Wireless MCU](#)

[Windows Installer for SmartRF Flash Programmer 2](#)

More Questions:

Please Contact your local TI sales representative.
Or Contact
BDE Technology, Inc.

China:

Creativity Building B2-403, 162 Science Ave, Science City, Guangzhou, 510663

Tel: +86-020-28065335

Website: <http://www.bdecomm.com/cn/> Email: shu@bdecomm.com

USA:

67 E Madison St, Ste 1603A#436, Chicago, IL 60603

Tel: +1-312-379-9589

Website: <http://www.bdecomm.com/> Email: info@bdecomm.com