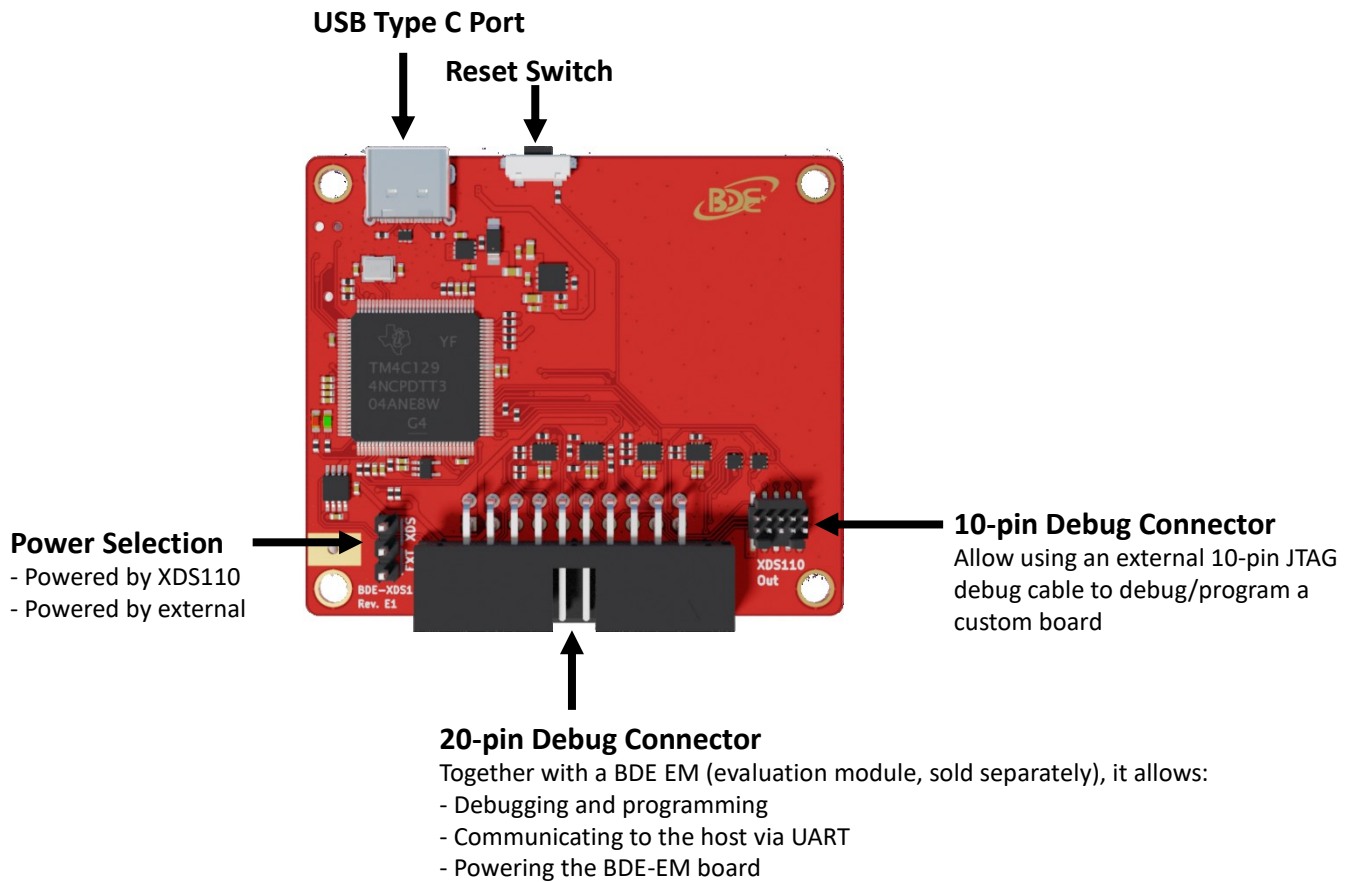


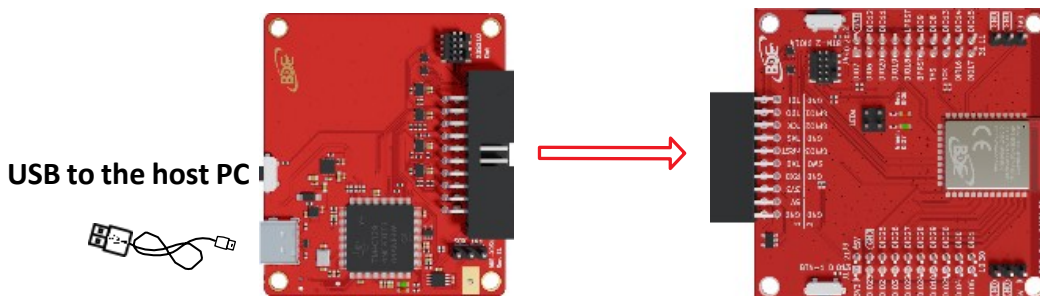
### 1. BDE-XDS110 Overview



### 2. Hardware Setup

To use the BDE-XDS110 debug probe with a BDE EM (evaluation module), you need to connect the 20-pin debug connector to the corresponding header on the EM.

Simply connect the edge connector of the debug probe to the edge connector of the EM and connect the USB port of the debug probe to the host computer. A secondary UART communications channel will also be available and power to the EM will be provided directly.



To use the 10-pin debug connector to debug a custom board, you need to purchase the cables separately to allow debugging/programming, UART communications and power.

### 3. Ordering Information

Orderable Part Number	Core Chip	Product Type	Accessory	MOQ
BDE-XDS110	XDS110	Development Kit	1x USB-A to USB-C cable	1

### 4. Revision History

Revision	Date	Description
V1.0	21-December-2023	First release

The latest documentation can be found with this [link](#).

## Important Notice and Disclaimer

The information contained herein is believed to be reliable. BDE makes no warranties regarding the information contained herein. BDE assumes no responsibility or liability whatsoever for any of the information contained herein. BDE assumes no responsibility or liability whatsoever for the use of the information contained herein. The information contained herein is provided "AS IS, WHERE IS" and with all faults, and the entire risk associated with such information is entirely with the user. All information contained herein is subject to change without notice. Customers should obtain and verify the latest relevant information before placing orders for BDE products. The information contained herein or any use of such information does not grant, explicitly or implicitly, to any party any patent rights, licenses, or any other intellectual property rights, whether with regard to such information itself or anything described by such information.

### Contact

BDE Technology Inc.

USA: 67 E Madison St, # 1603A, Chicago, IL 60603, US

Tel: +1-312-379-9589

Website: <http://www.bdecomm.com>

Email: [info@bdecomm.com](mailto:info@bdecomm.com)

China: B2-403, 162 Science Avenue, Huangpu District, Guangzhou 510663, China

Tel: +86-20-28065335

Website: <http://www.bdecomm.com>

Email: [shu@bdecomm.com](mailto:shu@bdecomm.com)